

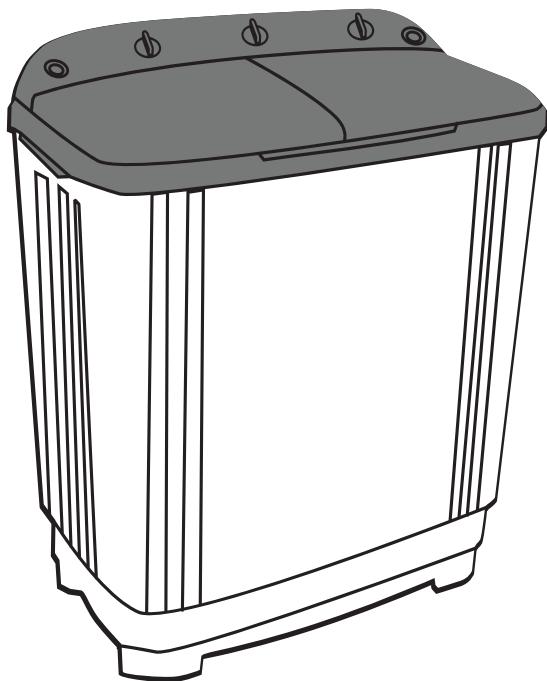
ONIDA

OWNER'S PRIDE

User's Manual

SEMI AUTOMATIC WASHING MACHINE
HYDROCARE SERIES...

MODEL : **HYDROCARE S65TR/OB.**
HYDROCARE S60TR/OB.



Before operating the Washing Machine, Please read this Guide thoroughly, and retain this manual for future reference.

Dear Customer

Congratulations on being the Proud owner of Semi Automatic Washing Machine.
Your Washing Machine comes with a Guarantee of Quality.

We take great pride in providing its customers with perfect products that adheres to international quality standards.

We are committed to international quality standards.

We are committed to provide the ultimate customer satisfaction as nothing brings us greater joy than having satisfied customers.

Feedback and suggestions based on your product usage experience are greatly appreciated.

CONTENTS:

1. **Introduction of part**
2. **Safety Precaution**
3. **Care and maintenance**.....
4. **Recommended Washing Procedure**
5. **Laundry Guide**
6. **Trouble shooting guide**.....
7. **Contact Us**

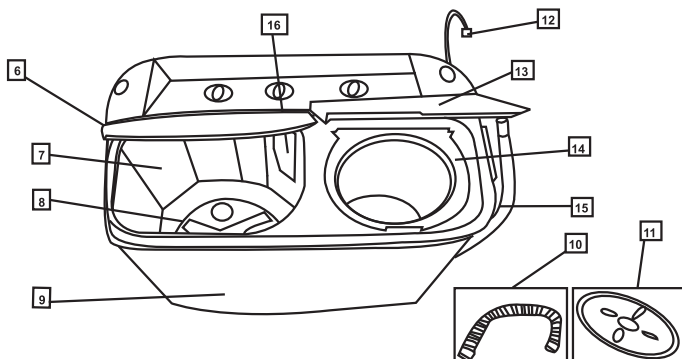


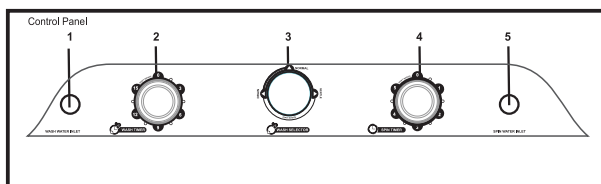
This appliance is not intended for use by persons (including children) with reduced physical, sensory or mental capabilities, or lack of experience and knowledge, unless they have been given supervision or instruction concerning use of the appliance by a person responsible for their safety.

Don't put hands into the tub when it's working.

The power cord of the washer is connected by Y shape. If must be replaced by the manufacturer, its service agent or similarly qualified persons in order to avoid a hazard.

INTRODUCTION OF PARTS





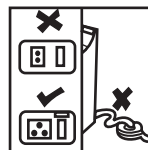
NAME OF PARTS

- | | |
|---------------------|----------------------|
| 1. Wash water inlet | 10. Water inlet hose |
| 2. Wash timer | 11. Safety cover |
| 3. Wash Selector | 12. Power cord |
| 4. Spin Timer | 13. Spin cover |
| 5. Spin water inlet | 14. Spin inner cover |
| 6. Wash cover | 15. Drain hose |
| 7. Wash tub | 16. Lint filter |
| 8. Pulsator | |
| 9. Twin tub | |

Note : Graphics may be different with the actual machine.

Safety Precautions

- Make sure that the washing machine is plugged to a 3 pin/5A electrical outlet and earth terminal is provided on the outlet.
- Unplug the power supply cord when you do not use it.
- To disconnect the washing machine from electrical mains completely, pull out the plug and do not pull it from the mains cord.
- Don't allow your kids to look inside the washing machine while running.
- This washing machine is meant for washing clothes with water as a medium. Do not use petrol or other chemicals. This can result in fire and damage.
- Do not use water with temperature exceeding 50 degree C, as this deforms the plastic parts in the machine. If you desire to use warm water add hot water to cold water in the wash. Do not pour hot water in an empty tub.
- Keep the machine away from flames and inflammable material. Do not expose the washing machine to direct sunlight or rain. Also avoid placing it in humid locations.
- Take Precautions not to pierce the control panel membrane sheet.
- Do not connect the earth wire to a phone wire, lightening rod.
- Do not press the button with an awl or a pin.
- Avoid overloading of wash and spin tub.
- Do not use wash & spin tub for water storage.

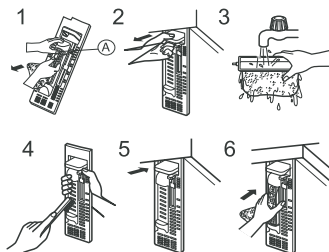


Care & Maintenance

Be sure to remove the power plug from main power supply before cleaning the machine and filter

Net Filter Cleaning

1. Pull out the lint filter from the lock use fingers pull out at the part of the Lint Filters side.
2. Turn the net inside out and clean with water.
3. Set back to the original position. Insert the bottom first as shown press down and lock as the arrow.



Cleaning the Wash Tub

1. After washing is complete, fill fresh water above the level of pulsator without adding clothes.
2. Run the machine for 1-2 minutes turn the knob to "DRAIN" position when pulsator is still rotating.
3. When water is completely drained out, turn the knob to "WASH" position.
4. Finally turn off the machine.

Recommended washing procedure

1. Open the water tap and fill the wash tub about half way.
2. Put in the laundry detergent and allow it to disperse well.
3. Put in the clothes to be washed and add water in accordance with the amount of cloth load.
4. Set the WASH TIMER as desired depending on the fabric type and the degree of soilage.
5. Use SCRUBBER for cleaning stiff area like collar and cuff of shirts
6. When washing is finished, set the Drain Selector to Drain

NOTE: Ensure that the clothes rotate freely during wash, if not, reduce the cloth load. (By removing some clothes from the machine)

Rinsing and Drying Rinsing

There are 2 ways to rinse:

1. **Rinse :** Fill the wash tub appropriately for the number of clothing being washed. Set wash timer for 15 Minutes. (Rinse will begin) and clothes will Rinse for a period of 15 Minutes.
2. **Intermediate Spin Rinse:** Put clothes inside the Spin Tub. Set Water Supply selected to SPIN TUB. Open the water tap and keep it open for one to two minutes and then close tap. Spin for one minute. When rinsing is over, set the Drain Selector to DRAIN. Do not keep the water tap open when the Spin tub is rotating, else machine will malfunction.

SPIN DRYING

Put clothes inside Spin Drum, distributing them evenly and ensure that the drain hose is lowered otherwise the machine will malfunction. After putting clothes in Spin Drum place spin Drum Cap over the clothes inside the tub to prevent them from flying out. Close the Spin Drum Lid. If the lid is not closed the Spin Drum will not rotate. Set the SPIN TIMER from 1 to 5 minutes according to the type of clothes. If the spin Drum starts shaking noticeably, open the lid and wait for the Spin Drum to stop spinning. Distribute the clothes evenly and re-start.

REFERENCE

TABLE 1. DETERGENT GUIDE

WASH LOAD	1.2 kg	1.2~2.5 kg	2.5~3.8 kg	3.8~5.0 kg	5.0 kg or ABOVE
Water Level	Min.	Low	Medium	High	Over Flow
Amount of concentrate Detergent	16 gm	25 gm	30 gm	38 gm	40 gm
Amount of Softener	17 ml	22 ml	26 ml	29 ml	35 ml

Table 2- LAUNDRY GUIDE

Amount of Laundry	Clothes	Synthetic Fiber	Cotton	Heavy Stained Clothes
	System			
1.2 ~ 2.5 kg	Washing Time	2~5 minutes	7~10 minutes	10-15 Minutes
	Wash Selector	GENTLE	NORMAL	NORMAL
2.5 ~ 3.8 kg	Washing Time	7~10 minutes	10~15 minutes	Wash 15 minutes
	Wash Selector	GENTLE	NORMAL	NORMAL
3.8 kg and above	Washing Time	Wash 10~15 minutes	Wash 15 minutes	Wash 15 minutes
	Wash Selector	GENTLE	NORMAL	NORMAL

Notes:

- If the wash load and water volume do not match, clothes may damage/water splash may occur.
- The quantity of wash load varies depending on fabric type, thickness and size of the clothes.
- Adjust the water level/wash load as required by carefully watching the movement of the clothes in the tub.

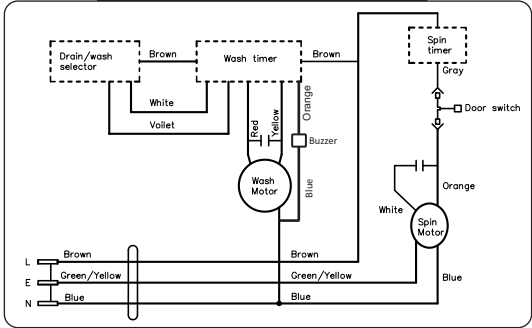
Trouble shooting guide

TROUBLES	CHECK POINTS
Motor not working	<ul style="list-style-type: none">• Check supply source.• Is the power cord firmly plugged in?• Is the timer turned to a suitable point except “OFF”?• Motor has been provided with “TOP” (Thermal overload protector). This will protect the motor from burning due to overheating caused by various variable factors such as overload voltage, frequency variation, etc. In such case motor supply will get off, thus stopping the motor. Wait for approximate ½ hour till motor cools to normal temperature. Restart the M/c to see if motor functions normally.
Spin dryer basket does not operate	<ul style="list-style-type: none">• Is there any cloth dropped between the basket and tub?• Is the spin dryer cover closed?• Is the laundry gathered to one side of the spin dryer basket?
Drain not drawing	<ul style="list-style-type: none">• Is the lint stuck to the plunger valve?• Is the end of the drain hose guide located at an excessive height?

SPECIFICATIONS

Max. Rated Capacity Wash	6.0 kg	6.5 kg
Max. Rated Capacity Spin	4.5 kg	4.5 kg
Power Supply	230 V AC / 50Hz	230 V AC / 50Hz
Washing Input	340 W	340 W
Spinning Input	150 W	150 W
Water Capacity High	50 Ltr	50 Ltr
Water Capacity Low	20 Ltr	20 Ltr
Wash Timer	15 min.	15 min.
Spin Timer	5 min.	5 min.

WIRING DIAGRAM



PACKING LIST

Name	Quantity
Semi Automatic washing machine	1
Spin-dry safety lid	1
Inlet pipe	1
User manual	1

Trouble Shoot Table

Problem	Reason	Solution
The pulsator does not rotate	a. Power out or switch off b. Transmission belt burst c. Pulsator is blocked by something	a. Switch on plug b. Assemble the transmission belt c. Remove the blockage
The pulsator rotates too slowly	a. Belt becomes loose b. The flexible screw of motor is loose	a. Tighten the belt or replace it b. Tighten the belt and the screw
Abnormal noise and vibration	a. The clothes in the spin-dry tub are unbalanced b. Something was stuck between pulsator and wash tub	a. Place the clothes neatly b. Remove it.
Water leaks from wash tub	a. The hose is not tightened with the wash tub	a. Tighten it

Usage instructions for semi-automatic washing machine

Step 1

- Select the wash option (Normal/Gentle) on the selector switch
- Wash: Put clothes in the wash tub with water and detergent. Start the Wash function.
- Pulsator will rotate and wash the clothes for 15 minutes

Step 2

- Place the clothes in the spin tub.
- Select spin timer for the time period required.
- This is required to remove excess soap

Step 3

- Transfer clothes to the wash tub.
- Rinsing: Fill in water only and select wash time for 3-4 minutes.
- After this is complete, select the drain mode to drain out water

Step 4

- Drying : Transfer clothes to spin tub and select spin time to complete final drying process.

Disposal & RoHS Declaration



This product is ROHS compliant

This marking indicates that this product should not be disposed with other household wastes. To prevent possible harm to the environment or human health from uncontrolled waste disposal, recycle it responsibly to promote the sustainable reuse of material resources. To return your used device for environmentally safe recycling please use the collection systems or contact the brand help desk.

RoHS
COMPLIANT

WARRANTY

Standard Warranty period

Extended Warranty Period (applicable only
on the parts mentioned below)

2 years

3 years (only on wash motor)

Customer Privileges.

1. The warranty is confirmed only to the first purchase of the appliance and is non-transferable. This warranty card and purchase bill shall be presented to our staff at the time of service and the warranty shall be void if the warranty card is altered/tampered with or lost.
2. The warranty period (both standard Warranty Period and Extended Warranty Period) starts from the date of purchase of the appliance and shall be available to products installed within municipal limits.
3. The warranty covers only manufacturing defect in material that may arise despite normal operation and usage of the appliance in accordance with the user manual.
4. Repairs, installations & removal of the appliance shall be got carried out only by an Authorized Service Personnel, failing which warranty will be void.
5. In the event of change of address and contact details, the new address and the new contact details shall be intimated to the Authorised Service Center on the given toll free number for ensuring proper installation, Charges shall be applicable and borne and paid by customer.
6. Repairs &/or replacement of parts covered under warranty would be purely at the sole discretion of the Company & Authorised Service centre Head only.
7. In the event of a part covered under warranty / wash motor required to be repaired then our person's obligation will be to repair such part/ wash motor to restore the product to working condition.
8. The company's obligation in respect of parts covered under warranty in event where repair is not possible shall be to provide replacement of defective parts with a functionally working part / wash motor of any brand/make.
9. It is hereby clarified that on expiry of Standard Warranty Period, visiting charges will be applicable for all visits and the same will be borne by the customer. In the Extended warranty period, in case the product needs to be transported to the Authorised Service Center for repair, the transportation charges from and to the place of installation shall be borne and paid by the customer.
10. The customer shall provide a reasonable, sufficient and safe working space to access the appliance for service. The customer is liable to move away all blocking objects or move the appliance to an appropriate location with electricity /gas/water supply and drainage for testing of the appliance.
11. In case of appliance requires to be repaired at service centre, all expenses incurred in transportation of the appliance or parts thereof from and to the company's Authorised Service Center, as well as expenses incurred on deputing of service personnel/technician towards conveyance, inspection and other incidental expenses, will borne and paid by the customer.
12. In case of repairs the replaced spare part will be warranted only for the unexpired period of the warranty.
13. The company shall be under no obligation or deemed to be in default or liable for cost , compensation , damage, penalty , fine, or otherwise on account of delay or failure in performance resulting from causes beyond its reasonable control (e.g. strikes, floods, earthquakes etc.) including but not limited to delay in servicing due to non-availability of spare parts and/or accessories.
14. The defective part shall belong to the company.
15. Warranty issued is subject to purchase from authorized dealers and repair by company's authorized service centre only .
16. Dispute if any in respect of Warranty shall be subject to exclusive jurisdiction of Mumbai court irrespective of the point of sale

Warranty is not applicable in any of the following cases:

1. If the warranty card is not duly filled and does not bear the stamp, date and signature of the authorized Dealer.
2. The warranty does not cover any consequential or resulting liability, damage or loss to property or life arising directly or indirectly as a result of appliance failure, breakdown, or accident or usage of the Appliance not in accordance with the operating / user manual.
3. Warranty is not applicable on plastic parts , electrical parts ,top, lid, assembly, control panel , window, knobs, nut , bolts, drain pipe, cabinet, dispenser assembly, drain hose, filter, castors, wheels, foot, drum , body of the washing machine and washer .The warranty does not cover consumables, normal wear & tear parts, plastic, glass and/or rubber parts, operational parts and accessories.
4. If the Appliance has been subjected to improper use such as operated on trolley other than the one, if any purchased from the Company, use contrary to user manual, misused, abused, not cared for, abnormal use, use of sea water, sub-standard detergent, exposure to dampness, excessive heat, excessive humidity and other extreme environmental conditions, corrosion, damage beyond repair, rusting, unauthorised modifications, unauthorized repairs, neglect, accident, damage in transit, alteration, acts of God, spillage of liquid or food particles, faulty electric wiring/cabling, abnormal voltage/power supply beyond appliance specifications, damage/breakage/non-functioning of appliance due to rodents, rats, cockroaches and ants etc.
5. The warranty does not cover preventive checks, routine maintenance, cleaning, de-scaling and overhaul and charges shall be borne and paid by Customer.
6. If the Appliance is used by commercial establishment including but not limited to hospitals, saloon, institutions, laundry, community hall and other similar establishment or by an individual/ firm for commercial purpose.
7. If the warranty card, bill of purchase, serial number of appliance is removed, altered, defaced, made illegal/tampered with. No Person including the customer, dealer, service personnel shall have the right to vary the terms of this warranty.
8. If incorrect/not suitable detergents are used for laundry appliances.
9. If repair, installation work is carried out by persons other than Authorised Service Personnel.
10. Damage to the appliance or any part(s) due to transportation or shifting or arising out of improper storage of the appliance at the Customer's premises.

WARRANTY CARD

Machine Sl. No.: _____	
Model : _____	
Dealer's Name : _____	
Address : _____	
Date of Purchase : _____	
Date of Expiry : _____	
Stamp of Dealer	

* CONDITIONS APPLY AS DESCRIBED IN MANUAL

ONIDA

Service

24x7 Customer Care No.

74 909 55 555

www.onida.com

Email: customer.care@onida.com

ONIDA

OWNER'S PRIDE

MARKETED BY :

MIRC ELECTRONICS LIMITED

ONIDA HOUSE, G-1, MIDC, MAHAKALI CAVES ROAD,
ANDHERI (EAST), MUMBAI 400 093

MADE IN INDIA

www.onida.com